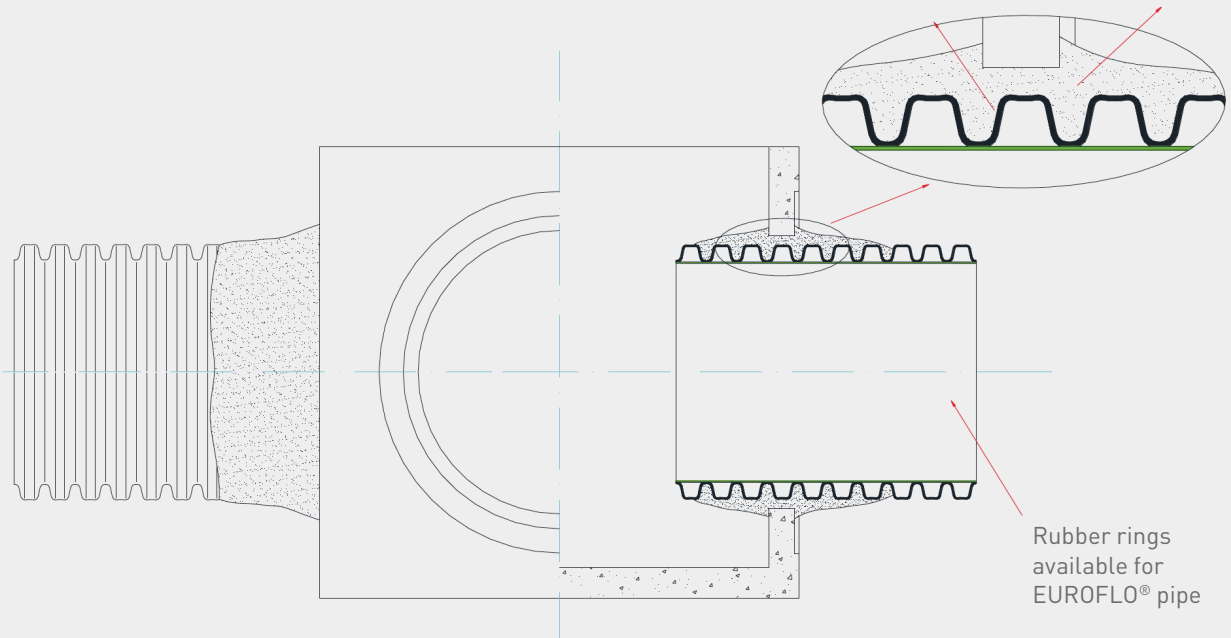


CONNECTING EUROFLO[®] TO CONCRETE MANHOLES

Rubber rings available for all EUROFLO[®] pipes as required.
This information is valid for all SN ratings.

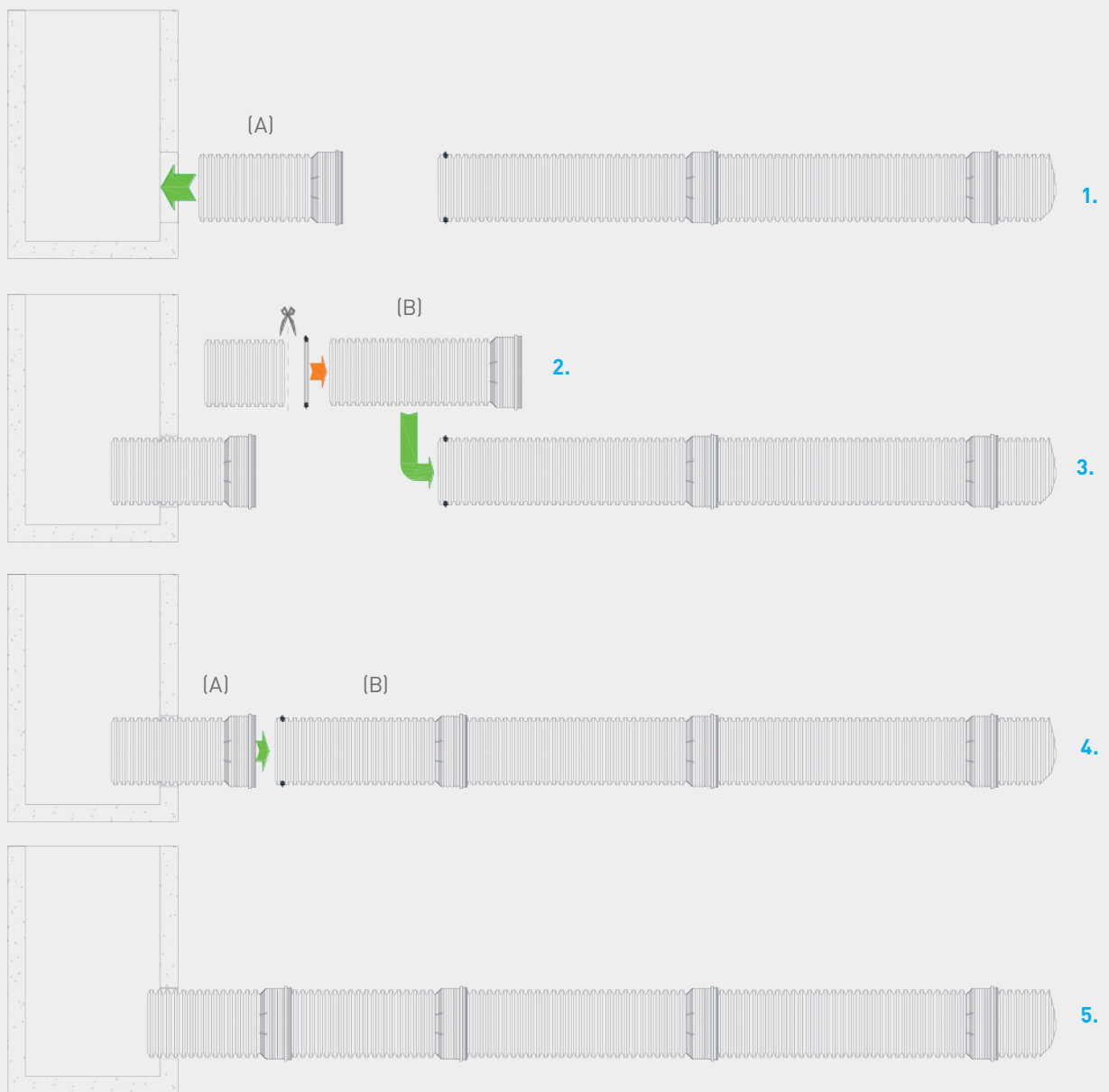
Rough up this
zone of the
external surface
of the pipe to
ensure maximum
adhesion

Fill the gap
between the
hole and sleeve
by using epoxy
mortar for
at least 4 + 4
corrugations



HOW TO INSTALL A FLEXIBLE JOINT AFTER A MANHOLE

1. Insert short section loosely into manhole at correct invert (A)
2. Cut extra length with socket end to go between existing pipe and where section (A) will be permanently
3. Slide section (A) into manhole, drop section (B) in
4. Slide (A) over section (B) and finish the epoxy seal on (A) as diagram on front page
5. Completed pipeline



Please note the above installation is a general guideline. Local regulations may vary between regions.