

# FIXING BROKEN PVC PIPES

Non Pressure

## HOW TO CARRY OUT REPAIRS OR CONNECTIONS AFTER INSTALLATION

Fixing broken PVC pipes can be a difficult job. PVC pipes do not bend, giving you two fixed points with which to try and carry out the repair.

There are a few different products you can use when fixing breaks in PVC pipes including slip couplings, flexible connectors and a quick-repair coupling. Whatever product you use, the method is the same.

If the repair is above ground ignore the excavation points.

## FIXING DWV AND STORMWATER PIPES FROM 40MM AND ABOVE UNDERGROUND

1. Dig up the pipe and expose a wide enough trench so that you can cut out the section that is broken
2. Measure the length of your repair coupling and dig back at least that extra length
3. Dig under the pipe and batter back the side of the trench so that dirt doesn't fall in
  - a. Observe OSH regulations if deeper than 1.5m
  - b. It is quicker in the long run to be generous in excavation and have more room to work in
4. Cut out the broken section and remove
5. Chamfer the ends of the pipe and slide a repair coupling over each end
6. Cut the pipe to fill the gap and chamfer each end. Put a witness mark on the pipe half the width of the repair coupling
7. Put in place and slide the repair couplings over and up to the witness mark

## OPTIONS FOR REPAIR COUPLING



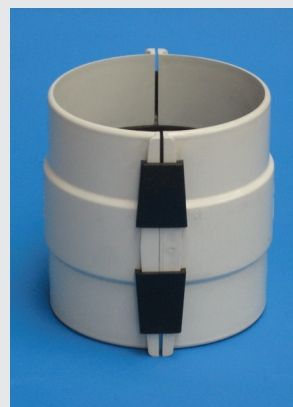
### SLIP COUPLINGS

- Available from 90mm – 300mm
- 90mm is a glued joint
- 100mm to 300mm have two rubber rings, be generous with the lubricant
- Ensure you keep the pipe clean for ease of install



### FLEXIBLE CONNECTOR

- Available from 40mm – 300mm
- These are a very good solution for those who are not familiar with this type of repair
- Lubricant is not needed because it relies on the stainless-steel bands to ensure a leak-free joint



### QUICK-REPAIR COUPLING

- Available in 100mm and 150mm
- Used a lot in Australia
- Good for vertical pipe repairs
- Clamps over the pipe ends meaning that the extra allowance to slide couplings is not needed
- Accurate positioning and straight pipe cutting are essential