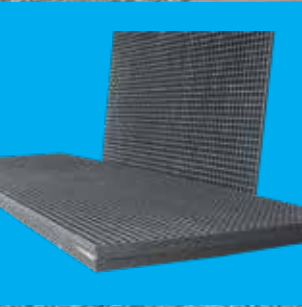
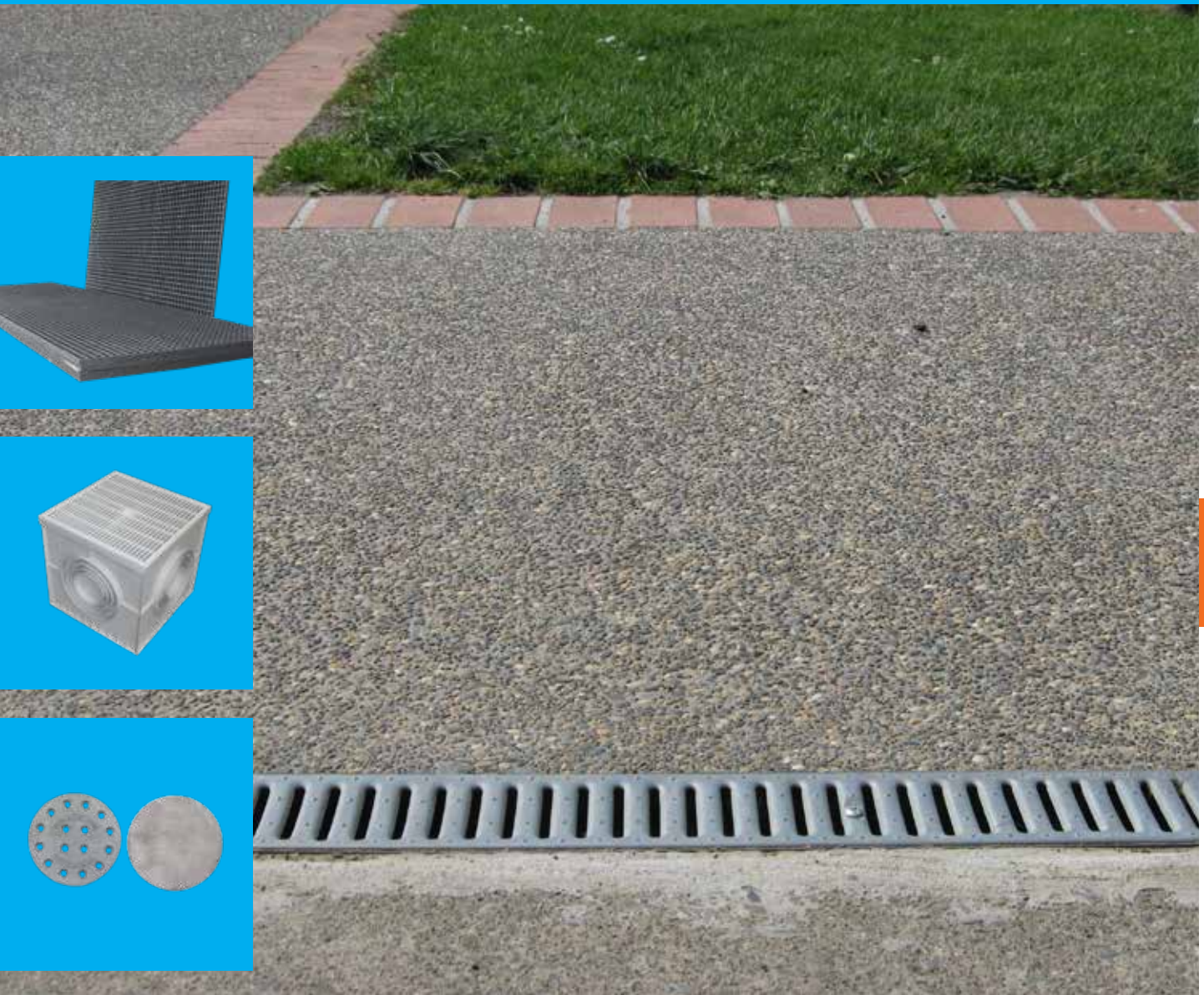




**YOUR
"GO TO"
CHOICE.**

STORMWATER COLLECTION & OTHER DRAINAGE PRODUCTS

Sumps / Channel & Grate / Filter cloth & sock / Lids / Grates & Fibreglass Grating



TOBY BOXES AND COVERS



SIZE	CODE	COMMENT
100mm	40-003	Toby Boxes (Alu)
150mm	40-004	Toby Boxes (Alu)
100mm	40-203	Toby Box - Round (Poly)
150mm	40-204	Toby Box - Round (Poly)
200mm	40-200	Sump Lids Round (Alu)
250mm	40-250	Sump Lids Round (Alu)
315mm	40-315	Sump Lids Round (Alu)
400mm	40-400	Sump Lids Round (Alu)
400mm	61810	Metal Look Cover (Poly)

ALUMINIUM GRATINGS



SIZE	CODE	COMMENT
100mm	40-000	Drain Grates 4 inch Round
125mm	40-001	Drain Grates 5 inch Round
150mm	40-002	Drain Grates 6 inch Round
200mm	40-010	Drain Grates 8 inch Round
225mm	40-011	Drain Grates 9 inch Round
200mm	40-201	Sump Grates Round
250mm	40-251	Sump Grates Round
315mm	40-316	Sump Grates Round
400mm	40-401	Sump Grates Round

Key

All Item DWV unless noted
M+F = Male, Female Ends

DWV= Drain Waste and Vent
F+F= Female, Female Ends

SW= Storm Water
ADJ= Adjustable

PITS & SUMPS



SIZE	CODE	COMMENT	CODE
250mm x 285mm deep	42-200	Poly. Square Base + Aluminium Grate	41-380 40-580
350mm x 315mm deep	42-201	Poly. Square Base + Aluminium Grate	41-930 40-590

Base & Grate can be sold separately

350mm x 600mm deep	42-202	Poly. Square Base with outlets 90/100 + web forge grate	41-400 42-105
470mm x 1030mm deep	42-205	Poly. Square Base with outlets 100/150 + web forge grate	41-405 42-108

Base & Grate can be sold separately

EURO SUMP OR PIT



SIZE	CODE	COMMENT
550mm x 550mm	40-301-550	Euro Frame
200mm x 200mm	40-302-200	Euro Grate
300mm x 300mm	40-302-300	Euro Grate
400mm x 400mm	40-302-400	Euro Grate
550mm x 550mm	40-302-550	Euro Grate
200mm x 200mm	40-305-200	Euro Lid
300mm x 300mm	40-305-300	Euro Lid
400mm x 400mm	40-305-400	Euro Lid
550mm x 550mm	40-305-550	Euro Lid
200mm x 200mm	40-308-200	Euro Base
300mm x 300mm	40-308-300	Euro Base
400mm x 400mm	40-308-400	Euro Base
550mm x 520mm	40-308-550	Euro Base

Key

All Item DWV unless noted
M+F = Male, Female Ends

DWV= Drain Waste and Vent
F+F= Female, Female Ends

SW= Storm Water
ADJ= Adjustable

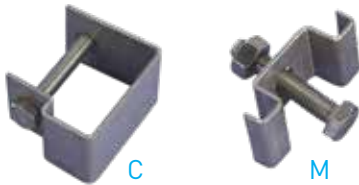
FIBREGLASS GRATING



SIZE	CODE	COMMENT
3.660m x 1.220m x 25mm	42-325	Grey Grating Fibre*
3.660m x 1.220m x 25mm	42-325GGG	Green grit Grating*
3.660m x 1.220m x 38mm	42-338	Grey Grating Fibre*
3.660m x 1.220m x 38mm	42-338GGG	Green grit Grating*

*Will cut to size if required

CLIPS FOR FIBREGLASS GRATING



SIZE	CODE	COMMENT
38mm	42-301	Fixing Clip Grating C Type
25mm	42-311	Fixing Clip Grating C Type
25mm or 38mm	42-302	Fixing Clip Grating M Type

SUMP PIPES



SIZE	CODE	COMMENT
200mm x 1000mm	41-200	Round Pipe (PVC)
250mm x 1000mm	41-250	Round Pipe (PVC)
315mm x 1000mm	41-315	Round Pipe (PVC)
400mm x 1000mm	41-316	Round Pipe (PVC)

Grate not included. Pipes are white or green.

OUTLET FLANGES



SIZE	CODE	COMMENT
100mm	42-210	Sump Outlets

Key

All Item DWV unless noted
M+F = Male, Female Ends

DWV= Drain Waste and Vent
F+F= Female, Female Ends

SW= Storm Water
ADJ= Adjustable

CHANNEL & GRATE ORIGINAL STYLE

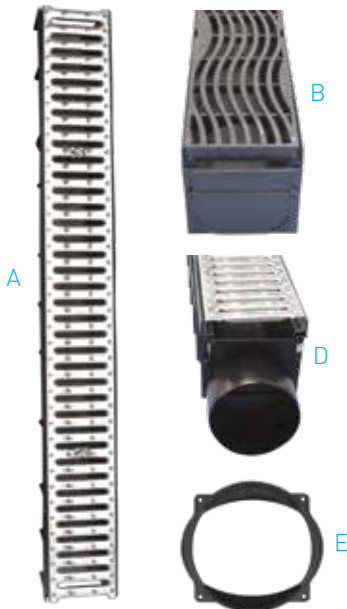


SIZE	CODE	COMMENT
100mm x 1m	43850	Channel & Grate
	43860	Connector
	43865	End Cap
	43870	Corner

A15 RATED

Light residential, garage entrances, doorway, pedestrian areas

CHANNEL & GRATE EURO STYLE



	SIZE	CODE	COMMENT
A	100mm x 1m	43950-1M	Channel and Galv Steel Grate
B	100mm x 1m	43960-1M	Channel and PE-HD Grate
C		43970	Closed end cap
D	100mm	43972	End Cap Outlet
E	100mm	43974	Vertical Outlet

A15 RATED

Light residential, garage entrances, doorway, pedestrian areas

DUCTING CHAMBER



SIZE	CODE	COMMENT
315mm	30000	Ducting Chamber
200mm	30200	Cap for Outlet
315mm	30220	Cap for top

Key

All Item DWV unless noted
M+F = Male, Female Ends

DWV= Drain Waste and Vent
F+F= Female, Female Ends

SW= Storm Water
ADJ= Adjustable

FILTER CLOTH



SIZE	CODE	COMMENT
600mm x 50m	43-506	Filter Cloth
2m x 50m	44-140	Filter Cloth AS140
2m x 50m	44-240	Filter Cloth AS240
4m x 50m	48-140	Filter Cloth AS140
4m x 100m	48-240	Filter Cloth AS240*
4m x 100m	48-280	Filter Cloth AS280*
4m x 100m	48-410	Filter Cloth AS410*

*Will cut to length if required

FILTER SOCK ON APPLICATOR



SIZE	CODE	COMMENT
110mm x 30m	43-607	Filter Sock on Applicator
110mm x 50m	43-608	Filter Sock on Applicator
110mm x 100m	43-609	Filter Sock on Applicator
160mm x 45m	43-614	Filter Sock on Applicator

TAPE



SIZE	CODE	COMMENT
50mm x 10m	D50	DENSO Tape
75mm x 10m	D75	DENSO Tape
100mm x 10m	D100	DENSO Tape
18mm x 20m	D18-20	Insulation Tape
48mm x 30m	D48-30	Poly Tape
100m	DKO-100	Warning Tape - Danger
100m	ECB-100	Warning Tape - Electrical
100m	SLB-100	Warning Tape - Sewer
12mm x 10m	PTFE - OTH	Rolls of PTFE Tape

Key

All Item DWV unless noted
M+F = Male, Female Ends

DWV= Drain Waste and Vent
F+F= Female, Female Ends

SW= Storm Water
ADJ= Adjustable

EPOXY MORTAR



SIZE	CODE	COMMENT
2 x 500ml	EP4503	Epoxy Mortar Pack
2 x 1 Litre	EP4505	Epoxy Mortar Pack
2 x 4 Litre	EP4506	Epoxy Mortar Pack
2 x 10 Litre	EP4510	Epoxy Mortar Pack

RAGS



SIZE	CODE	COMMENT
2kg	RAG2	Bag of Quality Rags
20kg	RAG20	Bag of Quality Rags

LATEX GLOVES



SIZE	CODE	COMMENT
	PT600	Box of Latex Gloves

Key

All Item DWV unless noted
M+F = Male, Female Ends

DWV= Drain Waste and Vent
F+F= Female, Female Ends

SW= Storm Water
ADJ= Adjustable

FIBREGLASS GRATING

FEATURES

- > Light weight
- > Superior strength
- > Corrosion resistant
- > Fire resistant
- > Anti slip
- > Non magnetic
- > Non conductive
- > Non sparking
- > Impact resistant
- > Easily cut and installed

AREAS OF USE INCLUDE:

- > Catwalks
- > Wash-down areas
- > Freezing works
- > Sheep yards
- > Wineries
- > Food processing
- > Substations
- > Electrical
- > Sump grates
- > Fish processing
- > Fishing trawlers

TWO GRADES

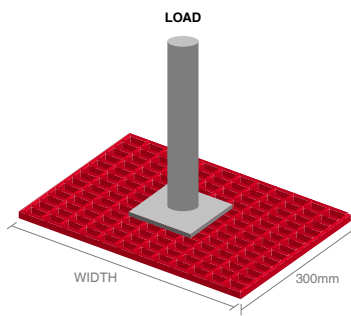
- 25mm Depth Walkable - Personnel
- 38mm Depth Walkable - Cattle

THREE SURFACE FINISHES

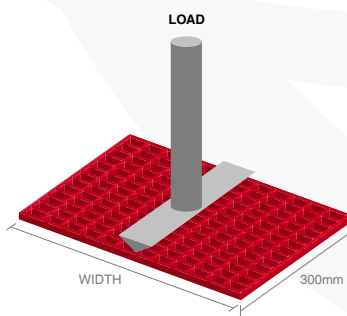
- > Concave top / Flat top / Grit top

SIMPLE FIXING SYSTEMS

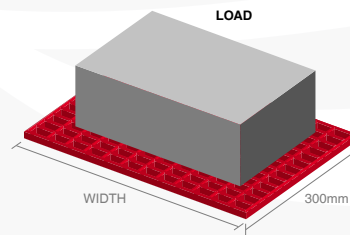
- > Stainless steel clips



Concentrated Load
Full Panel



Concentrated Line Load:
300mm Wide Strip



Uniform Load:
300 Wide Strip

LOAD SHEET UNDER 1% DEFLECTION

Description	Span (mm)	Concentrated point load (kg)	Concentrated line load (kg/300mm)	Uniform load (kg/sqm)
Mesh size (mm): 38.1 x 38.1 Thick: 25.4mm	305	1050	683	4956
	457	582	297	2943
	610	338	158	1224
	914	187	71	397
	1219	142	0	160
Mesh size (mm): 38.1 x 38.1 Thick: 38.1mm	305	1909	1457	14270
	457	1611	998	8163
	610	1211	552	4140
	914	688	245	1421
	1219	526	137	563

SUPPLIER: